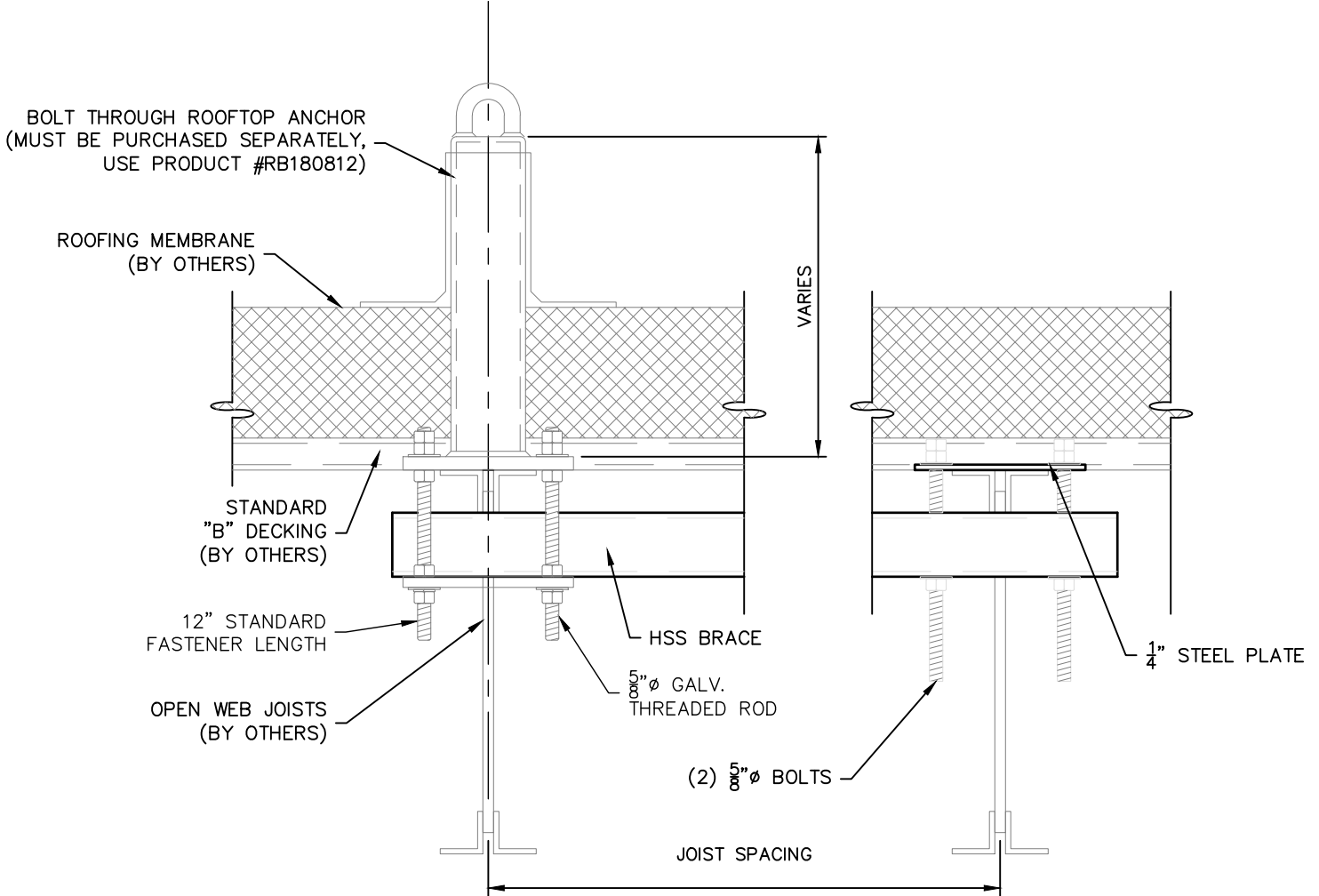


TECHNICAL DATA SHEET

OPEN WEB JOIST BAR REINFORCEMENT FRAMING

RJ 00 00 _

AXIS
ANCHOR PRODUCTS



PART # RJ 00 00 _

NOTES:

1. THE PROJECT STRUCTURAL ENGINEER IS RESPONSIBLE FOR THE DESIGN OF THE BUILDING STRUCTURE AND LOCAL REINFORCEMENT WHERE REQUIRED, TO WITHSTAND THE APPLIED LOADS OF THE ROOF SAFETY EQUIPMENT SUPPLIED BY ROOFTOP ANCHOR, INC.
2. FALL ARREST SAFETY ANCHORS ARE DESIGNED TO A TYPICAL MAXIMUM FALL ARRESTING FORCE OF 1,800 lbs WHEN WEARING A BODY HARNESS, WITH A FACTOR OF SAFETY OF 2 WITHOUT ANY PERMANENT DEFORMATION; AND TO 5,000 lbs AGAINST FRACTURE OR DETACHMENT.
3. THE OPEN WEB JOIST BAR REINFORCEMENT FRAMING IS DESIGNED TO BE USED IN CONJUNCTION WITH THE BEAM WRAP ROOFTOP ANCHOR.

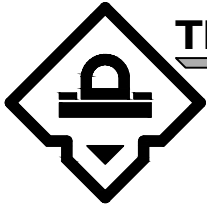
R]	ANCHOR TYPE (ROOFTOP)
J]	ATTACHMENT METHOD (OPEN WEB JOIST BAR)
0]	UNUSED
0]	UNUSED
0]	UNUSED
7]	JOIST SPACING: __" (72")
2]	

ROOFTOP ANCHOR

PROPRIETARY AND CONFIDENTIAL

The information contained in this drawing is the sole property of Rooftop Anchor, Inc. Any reproduction in part or as a whole without written permission of Rooftop Anchor, Inc. is prohibited.





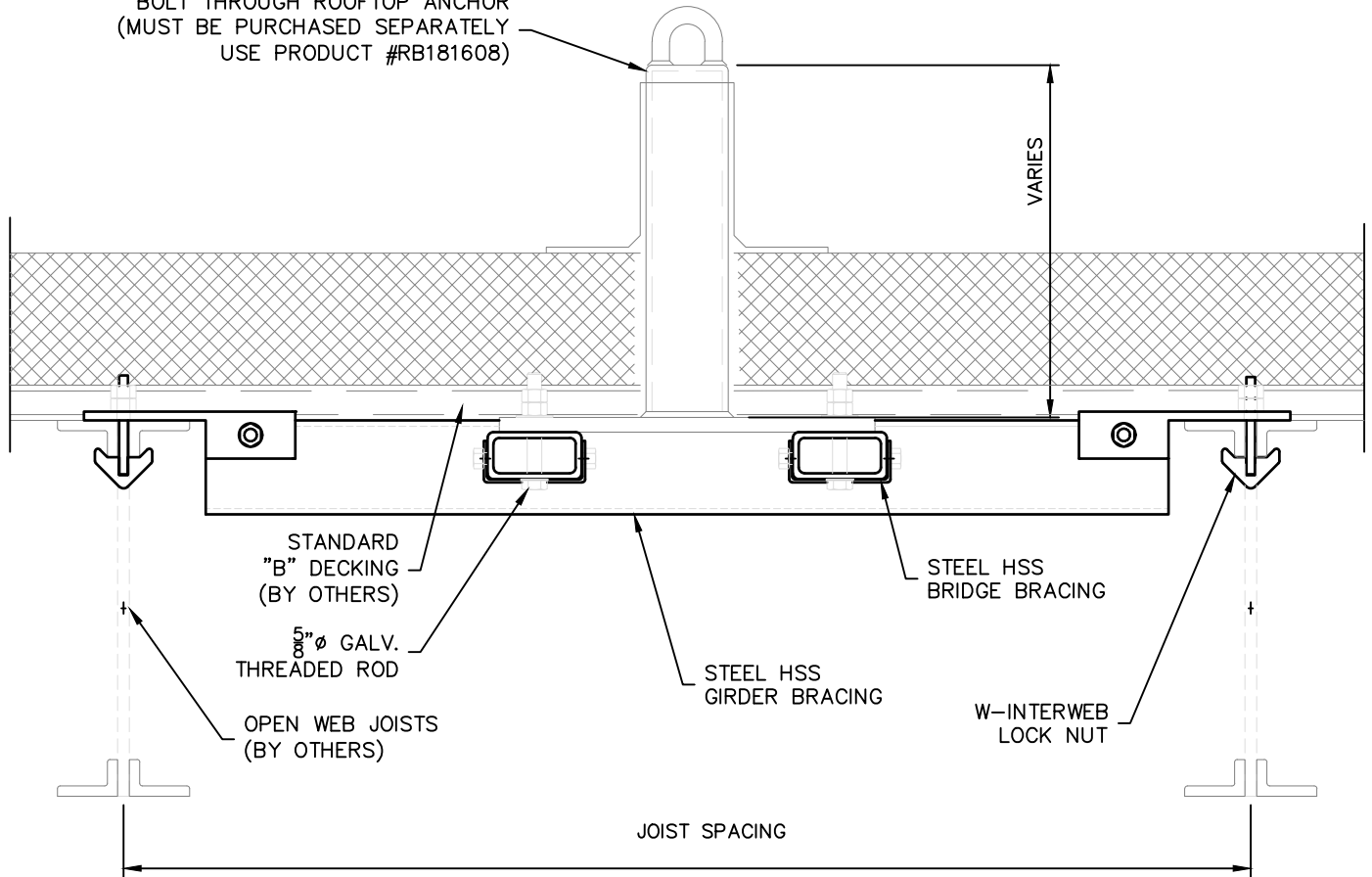
TECHNICAL DATA SHEET

OPEN WEB JOIST "H" FRAME REINFORCEMENT

RH 00 00 _

AXIS
ANCHOR PRODUCTS

BOLT THROUGH ROOFTOP ANCHOR
(MUST BE PURCHASED SEPARATELY
USE PRODUCT #RB181608)



PART # RH 00 00 _

NOTES:

1. THE PROJECT STRUCTURAL ENGINEER IS RESPONSIBLE FOR THE DESIGN OF THE BUILDING STRUCTURE AND LOCAL REINFORCEMENT WHERE REQUIRED, TO WITHSTAND THE APPLIED LOADS OF THE ROOF SAFETY EQUIPMENT SUPPLIED BY ROOFTOP ANCHOR, INC.
2. FALL ARREST SAFETY ANCHORS ARE DESIGNED TO A TYPICAL MAXIMUM FALL ARRESTING FORCE OF 1,800 lbs WHEN WEARING A BODY HARNESS, WITH A FACTOR OF SAFETY OF 2 WITHOUT ANY PERMANENT DEFORMATION; AND TO 5,000 lbs AGAINST FRACTURE OR DETACHMENT.
3. THE "H" FRAME REINFORCING IS DESIGNED TO BE USED IN CONJUNCTION WITH A BEAM WRAP ROOFTOP ANCHOR THAT HAS A 16"x16" BASEPLATE.

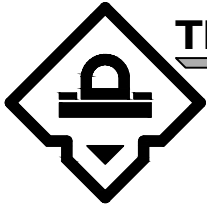
R]	ANCHOR TYPE (ROOFTOP)
H]	ATTACHMENT METHOD ("H" FRAME)
0]	UNUSED
0]	UNUSED
0]	UNUSED
7]	JOIST SPACING: __" (72")
2]	

ROOFTOP ANCHOR

PROPRIETARY AND CONFIDENTIAL

The information contained in this drawing is the sole property of Rooftop Anchor, Inc. Any reproduction in part or as a whole without written permission of Rooftop Anchor, Inc. is prohibited.



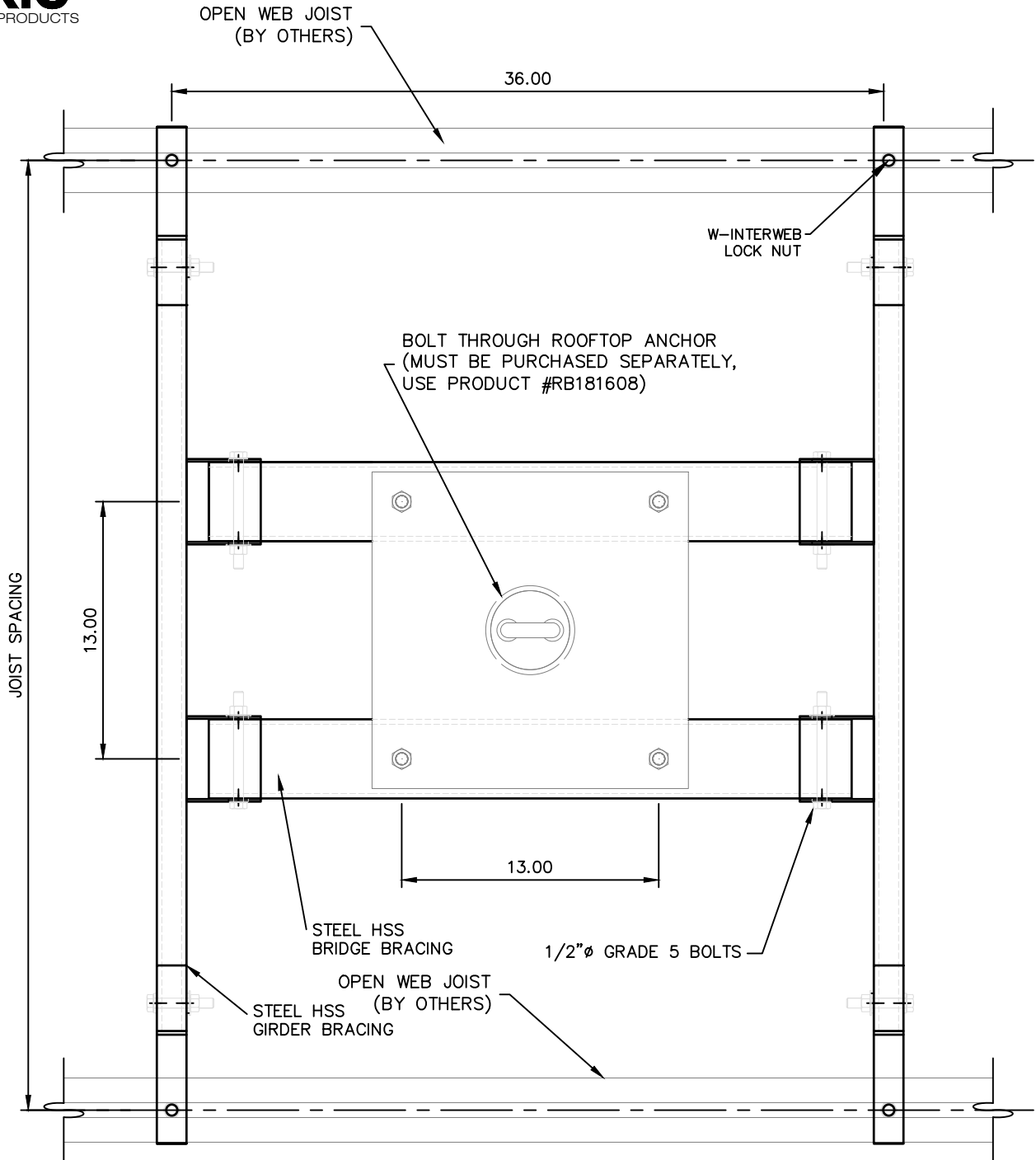


TECHNICAL DATA SHEET

OPEN WEB JOIST "H" FRAME REINFORCEMENT

RH 00 00 _

AXIS
ANCHOR PRODUCTS

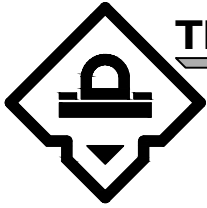


ROOFTOP ANCHOR

PROPRIETARY AND CONFIDENTIAL

The information contained in this drawing is the sole property of Rooftop Anchor, Inc. Any reproduction in part or as a whole without written permission of Rooftop Anchor, Inc. is prohibited.

7.3

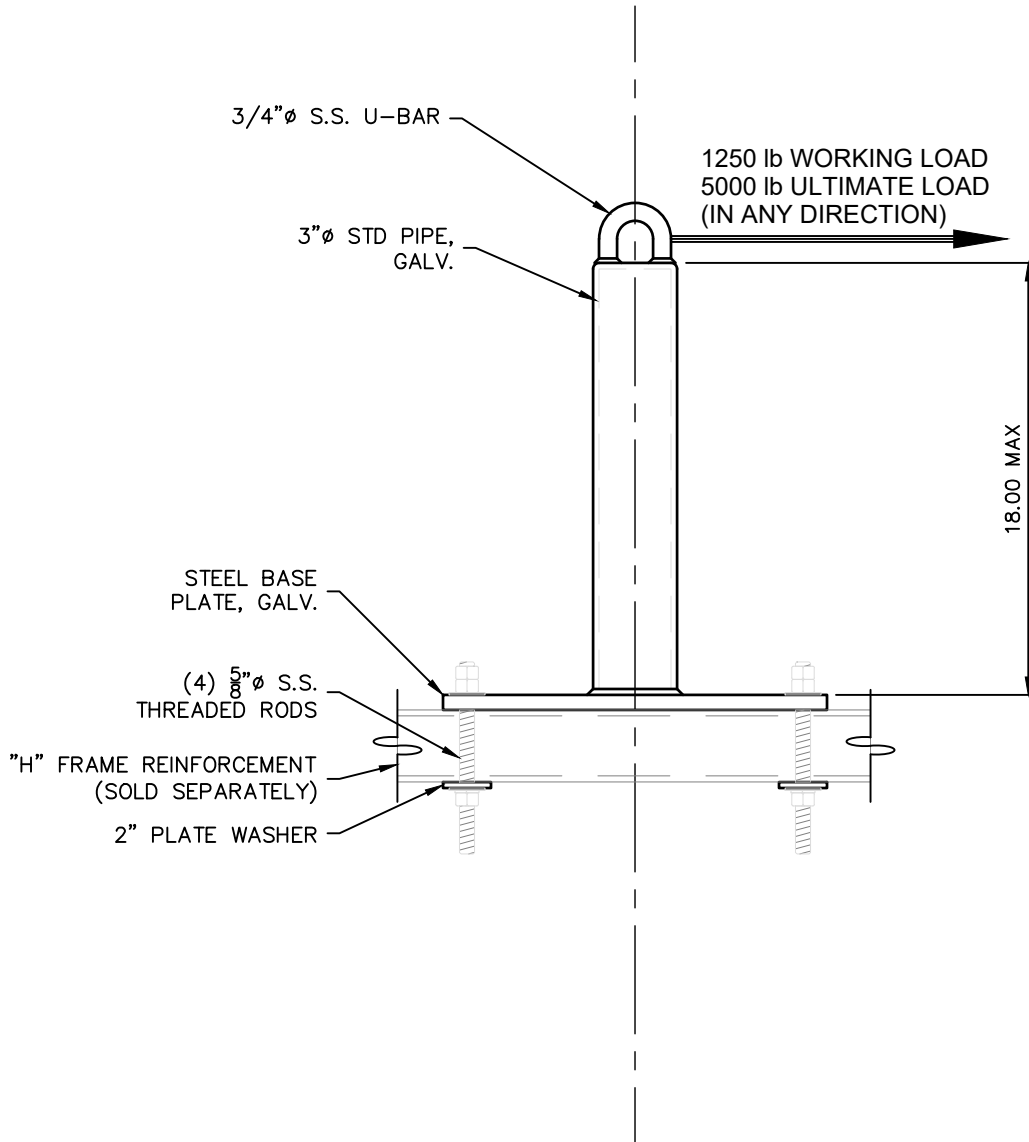


TECHNICAL DATA SHEET

18" BOLT THROUGH ANCHOR FOR "H" FRAME

RB181608

AXIS
ANCHOR PRODUCTS



ROOFTOP ANCHOR

PROPRIETARY AND CONFIDENTIAL

The information contained in this drawing is the sole property of Rooftop Anchor, Inc. Any reproduction in part or as a whole without written permission of Rooftop Anchor, Inc. is prohibited.

