

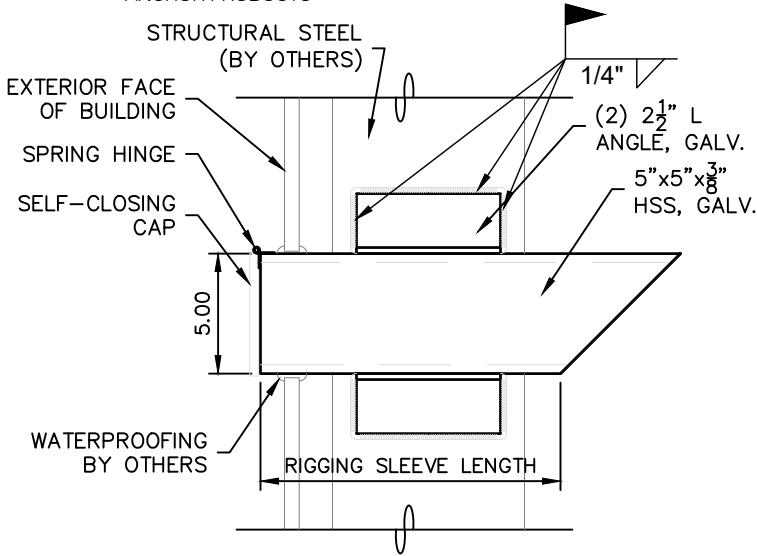
TECHNICAL DATA SHEET

HORIZONTAL RIGGING SLEEVE - WELDABLE

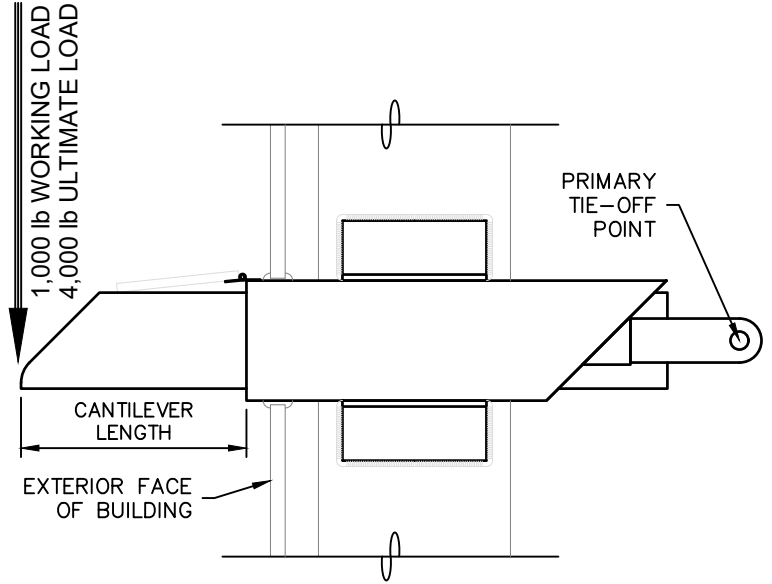
8.3

AXIS

ANCHOR PRODUCTS

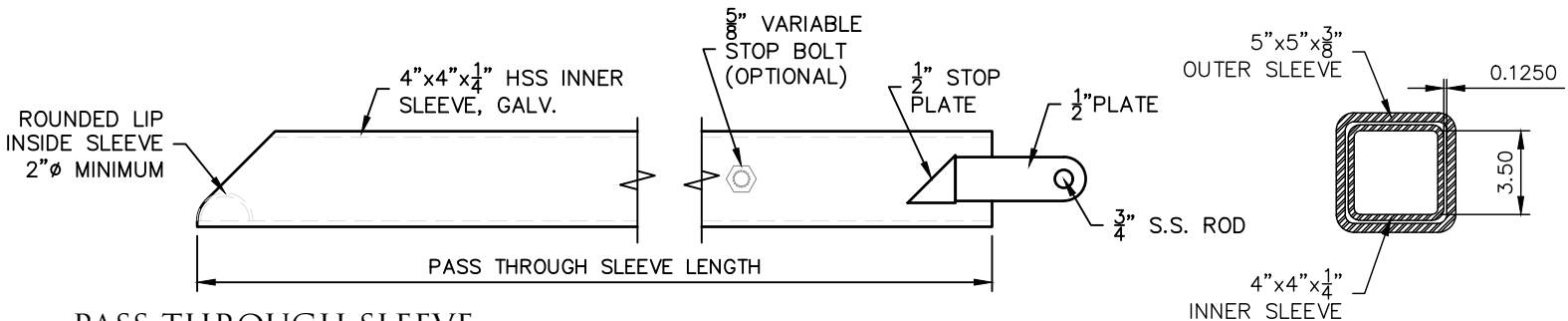


SIDE VIEW



SIDE VIEW - W/ PASS THROUGH SLEEVE

HORIZONTAL RIGGING SLEEVE



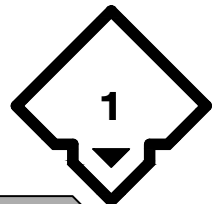
PASS-THROUGH SLEEVE

PART # HW _____

NOTES:

1. THE PROJECT STRUCTURAL ENGINEER IS RESPONSIBLE FOR THE DESIGN OF THE BUILDING STRUCTURE AND LOCAL REINFORCEMENT WHERE REQUIRED, TO WITHSTAND THE APPLIED LOADS OF THE ROOF SAFETY EQUIPMENT SUPPLIED BY ROOFTOP ANCHOR, INC.
2. FALL ARREST SAFETY ANCHORS ARE DESIGNED TO A TYPICAL MAXIMUM FALL ARRESTING FORCE OF 1,800 lbs WHEN WEARING A BODY HARNESS, WITH A FACTOR OF SAFETY OF 2 WITHOUT ANY PERMANENT DEFORMATION; AND TO 5,000 lbs AGAINST FRACTURE OR DETACHMENT.

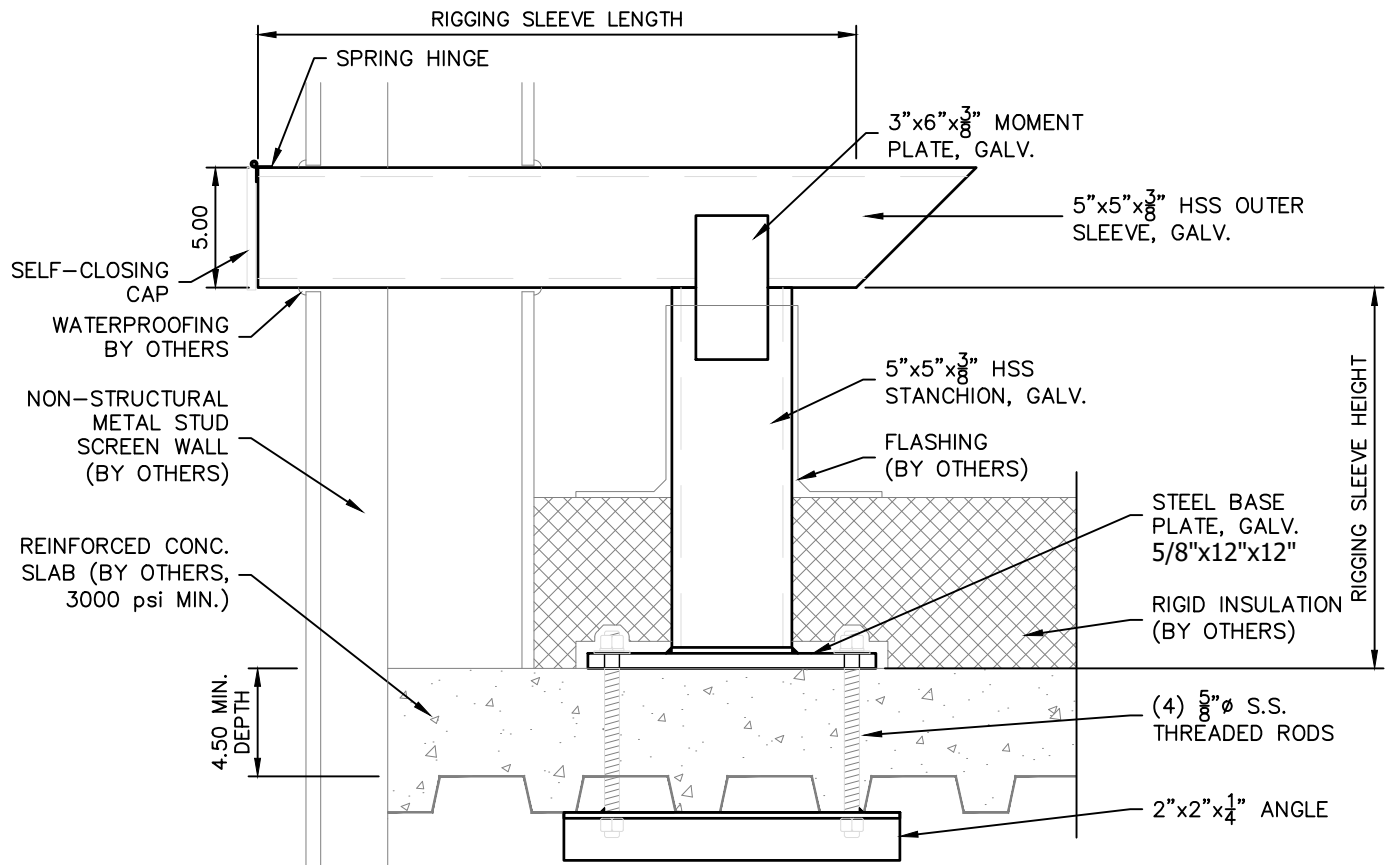
- H] SLEEVE ORIENTATION: (V) VERTICAL, (H) HORIZONTAL
- W] ATTACHMENT METHOD (WELDABLE)
- 3] PASS THROUGH SLEEVE LENGTH: __" (36")
- 6]
- 1] RIGGING SLEEVE LENGTH: __" (17")
- 7]
- 0] CANTILEVER LENGTH: __" (06")
- 6]



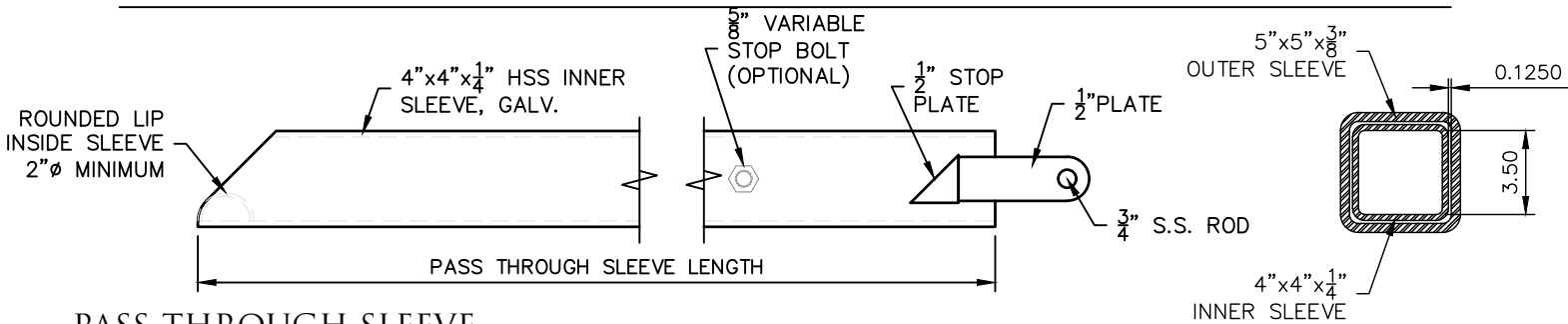
ROOFTOP ANCHOR

PROPRIETARY AND CONFIDENTIAL

The information contained in this drawing is the sole property of Rooftop Anchor, Inc. Any reproduction in part or as a whole without written permission of Rooftop Anchor, Inc. is prohibited.



HORIZONTAL RIGGING SLEEVE



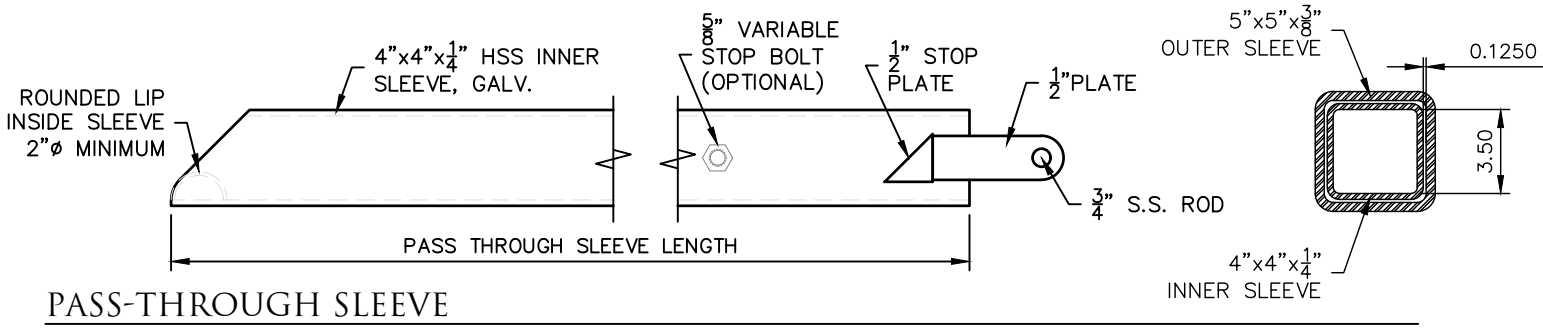
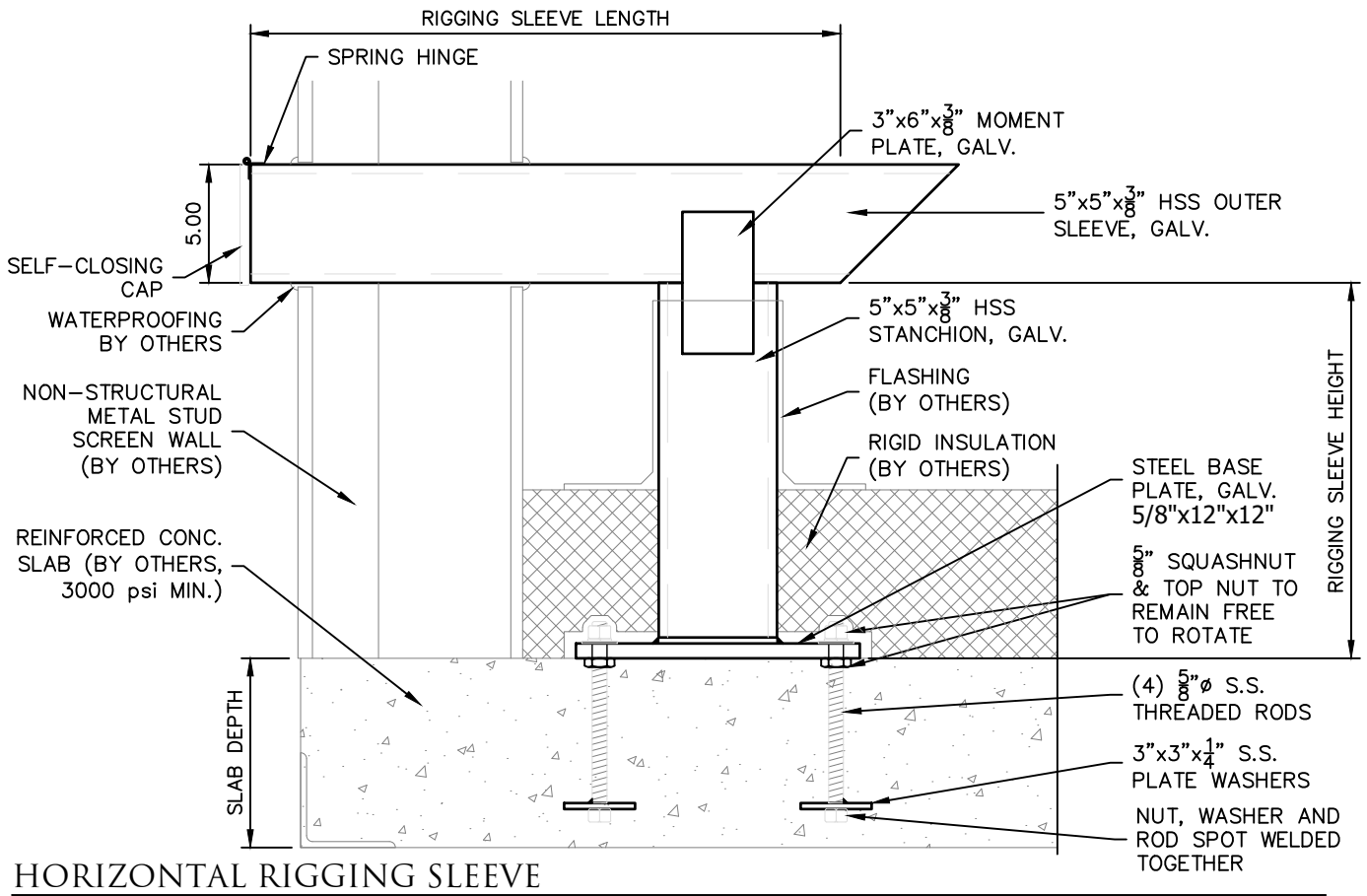
PASS-THROUGH SLEEVE

PART # HB _____

NOTES:

1. THE PROJECT STRUCTURAL ENGINEER IS RESPONSIBLE FOR THE DESIGN OF THE BUILDING STRUCTURE AND LOCAL REINFORCEMENT WHERE REQUIRED, TO WITHSTAND THE APPLIED LOADS OF THE ROOF SAFETY EQUIPMENT SUPPLIED BY ROOFTOP ANCHOR, INC.
2. FALL ARREST SAFETY ANCHORS ARE DESIGNED TO A TYPICAL MAXIMUM FALL ARRESTING FORCE OF 1,800 lbs WHEN WEARING A BODY HARNESS, WITH A FACTOR OF SAFETY OF 2 WITHOUT ANY PERMANENT DEFORMATION; AND TO 5,000 lbs AGAINST FRACTURE OR DETACHMENT.

- H] — SLEEVE ORIENTATION: (V) VERTICAL, (H) HORIZONTAL
- B] — ATTACHMENT METHOD (BOLT THROUGH)
- 3] — PASS THROUGH SLEEVE LENGTH: __" (36")
- 6] —
- 1] — RIGGING SLEEVE LENGTH: __" (17")
- 7] —
- 2] — RIGGING SLEEVE HEIGHT: __" (24")
- 4] —

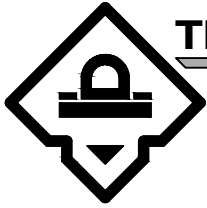


PART # HC _____

NOTES:

1. THE PROJECT STRUCTURAL ENGINEER IS RESPONSIBLE FOR THE DESIGN OF THE BUILDING STRUCTURE AND LOCAL REINFORCEMENT WHERE REQUIRED, TO WITHSTAND THE APPLIED LOADS OF THE ROOF SAFETY EQUIPMENT SUPPLIED BY ROOFTOP ANCHOR, INC.
2. FALL ARREST SAFETY ANCHORS ARE DESIGNED TO A TYPICAL MAXIMUM FALL ARRESTING FORCE OF 1,800 lbs WHEN WEARING A BODY HARNESS, WITH A FACTOR OF SAFETY OF 2 WITHOUT ANY PERMANENT DEFORMATION; AND TO 5,000 lbs AGAINST FRACTURE OR DETACHMENT.

- H] — SLEEVE ORIENTATION: (V) VERTICAL, (H) HORIZONTAL
- C] — ATTACHMENT METHOD (CAST-IN-PLACE)
- 3] — PASS THROUGH SLEEVE LENGTH: __" (36")
- 6] —
- 1] — RIGGING SLEEVE LENGTH: __" (17")
- 7] —
- 2] — RIGGING SLEEVE HEIGHT: __" (24")
- 4] —

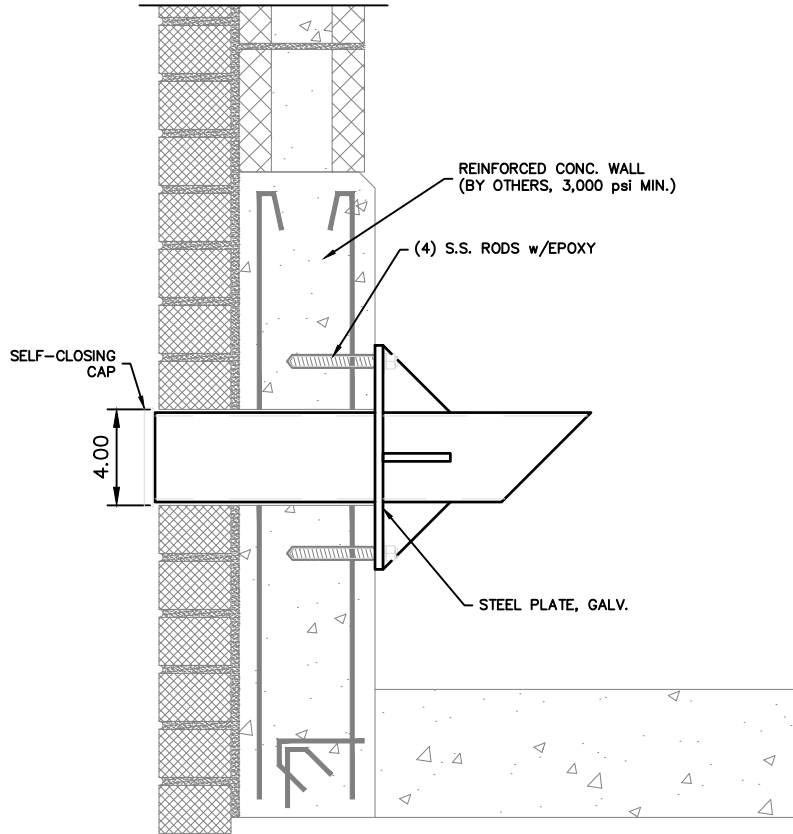


TECHNICAL DATA SHEET

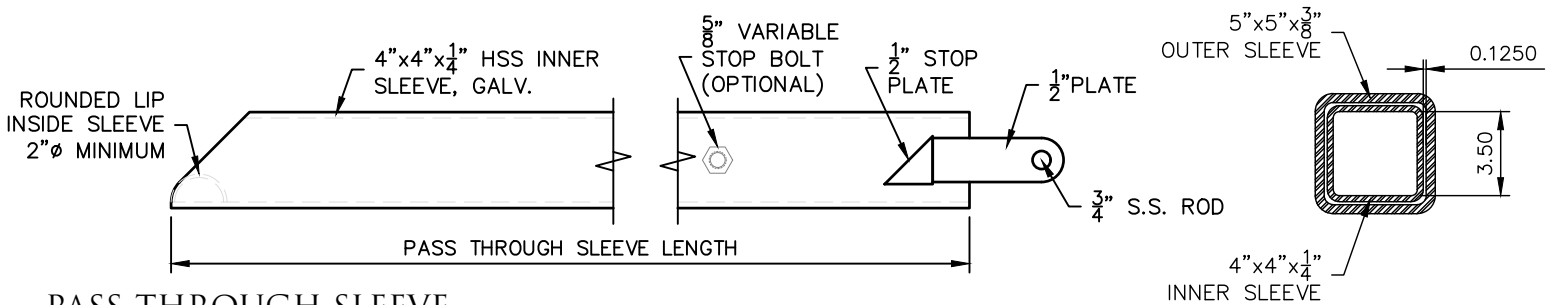
HORIZONTAL RIGGING SLEEVE - WALL MOUNTED

CUSTOM

AXIS
ANCHOR PRODUCTS



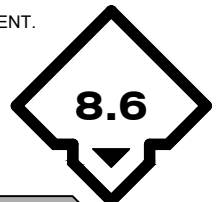
HORIZONTAL RIGGING SLEEVE



PASS-THROUGH SLEEVE

NOTES:

1. THE PROJECT STRUCTURAL ENGINEER IS RESPONSIBLE FOR THE DESIGN OF THE BUILDING STRUCTURE AND LOCAL REINFORCEMENT WHERE REQUIRED, TO WITHSTAND THE APPLIED LOADS OF THE ROOF SAFETY EQUIPMENT SUPPLIED BY ROOFTOP ANCHOR, INC.
2. FALL ARREST SAFETY ANCHORS ARE DESIGNED TO A TYPICAL MAXIMUM FALL ARRESTING FORCE OF 1,800 lbs WHEN WEARING A BODY HARNESS, WITH A FACTOR OF SAFETY OF 2 WITHOUT ANY PERMANENT DEFORMATION; AND TO 5,000 lbs AGAINST FRACTURE OR DETACHMENT.



ROOFTOP ANCHOR

PROPRIETARY AND CONFIDENTIAL

The information contained in this drawing is the sole property of Rooftop Anchor, Inc. Any reproduction in part or as a whole without written permission of Rooftop Anchor, Inc. is prohibited.