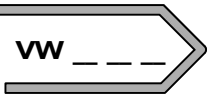
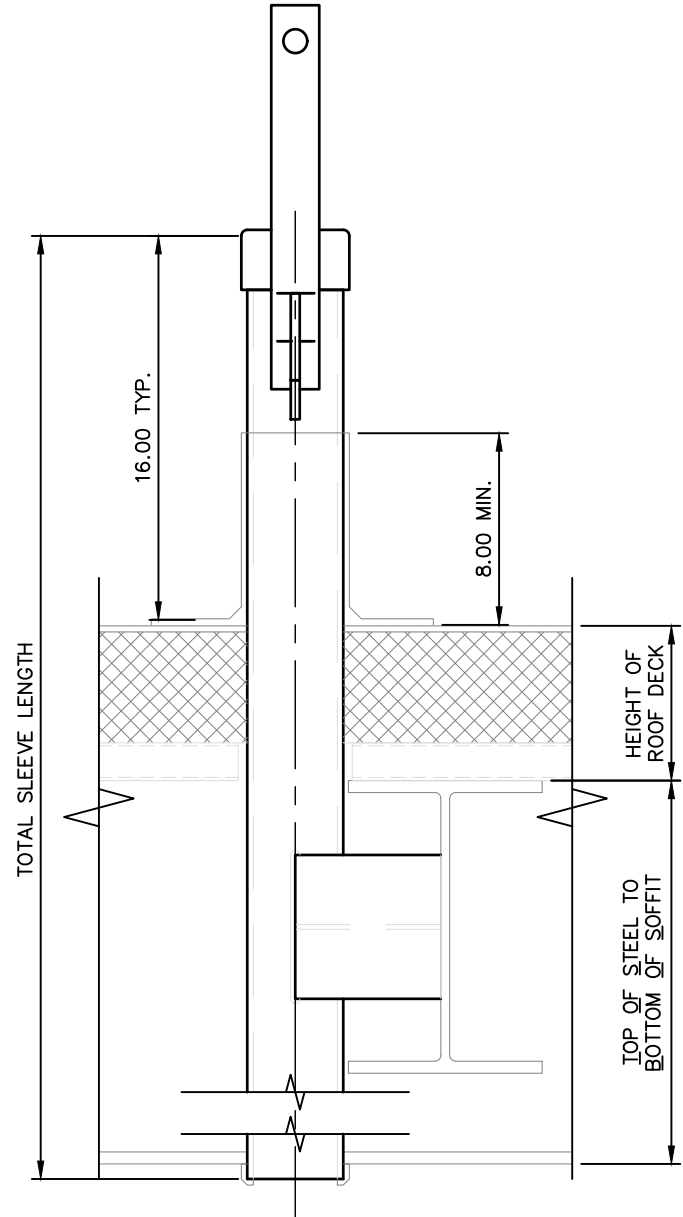
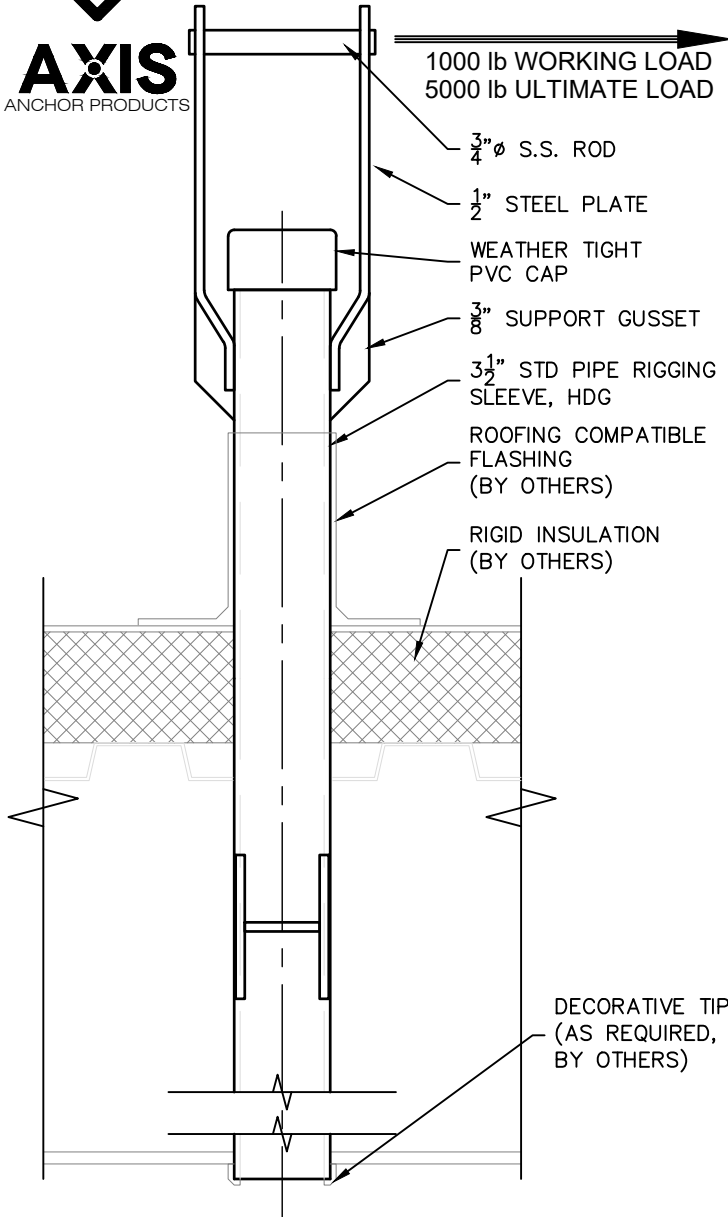


# TECHNICAL DATA SHEET

## WELDABLE RIGGING SLEEVE



**AXIS**  
ANCHOR PRODUCTS



### PART # VW \_\_\_\_\_

**NOTES:**

1. THE PROJECT STRUCTURAL ENGINEER IS RESPONSIBLE FOR THE DESIGN OF THE BUILDING STRUCTURE AND LOCAL REINFORCEMENT WHERE REQUIRED, TO WITHSTAND THE APPLIED LOADS OF THE ROOF SAFETY EQUIPMENT SUPPLIED BY ROOFTOP ANCHOR, INC.
2. FALL ARREST SAFETY ANCHORS ARE DESIGNED TO A TYPICAL MAXIMUM FALL ARRESTING FORCE OF 1,800 lbs WHEN WEARING A BODY HARNESS, WITH A FACTOR OF SAFETY OF 2 WITHOUT ANY PERMANENT DEFORMATION; AND TO 5,000 lbs AGAINST FRACTURE OR DETACHMENT.

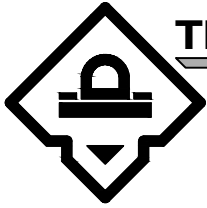
- V ] SLEEVE ORIENTATION: (V) VERTICAL, (H) HORIZONTAL
- W ] ATTACHMENT METHOD (WELDABLE)
- 6 ] TOTAL SLEEVE HEIGHT: \_\_" (60")
- 0 ]
- 1 ] HEIGHT OF ROOF DECK: \_\_" (17")
- 7 ]
- 2 ] T.O.S. - B.O.S.: \_\_" (25")
- 5 ]



**PROPRIETARY AND CONFIDENTIAL**

The information contained in this drawing is the sole property of Rooftop Anchor, Inc. Any reproduction in part or as a whole without written permission of Rooftop Anchor, Inc. is prohibited.



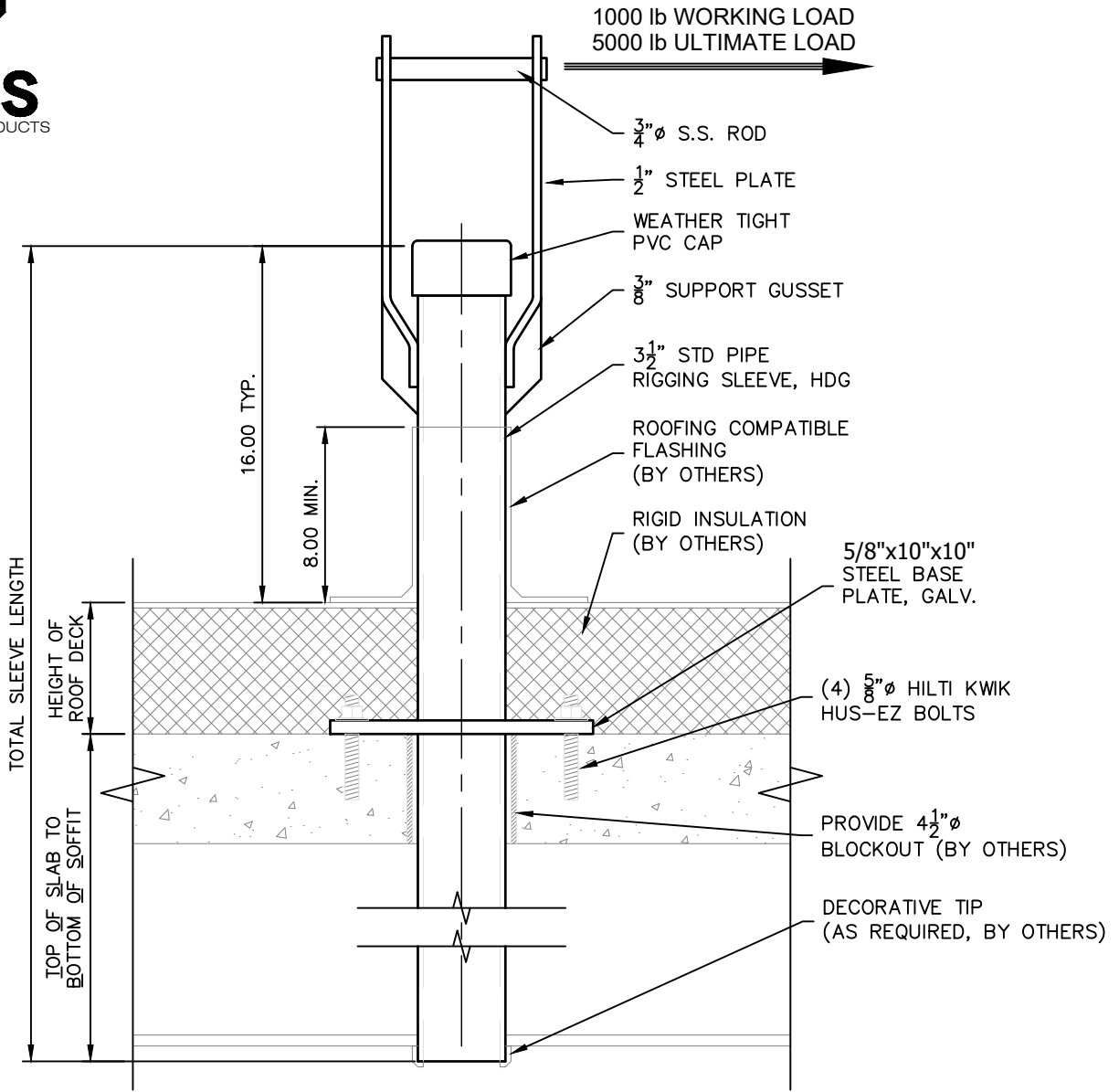


# TECHNICAL DATA SHEET

## RIGGING SLEEVE ON CONCRETE DECK

VC \_ \_ \_

**AXIS**  
ANCHOR PRODUCTS



PART # VC \_ \_ \_

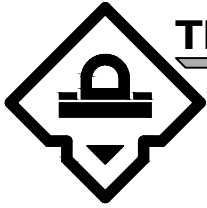
**NOTES:**

1. THE PROJECT STRUCTURAL ENGINEER IS RESPONSIBLE FOR THE DESIGN OF THE BUILDING STRUCTURE AND LOCAL REINFORCEMENT WHERE REQUIRED, TO WITHSTAND THE APPLIED LOADS OF THE ROOF SAFETY EQUIPMENT SUPPLIED BY ROOFTOP ANCHOR, INC.
2. FALL ARREST SAFETY ANCHORS ARE DESIGNED TO A TYPICAL MAXIMUM FALL ARRESTING FORCE OF 1,800 lbs WHEN WEARING A BODY HARNESS, WITH A FACTOR OF SAFETY OF 2 WITHOUT ANY PERMANENT DEFORMATION; AND TO 5,000 lbs AGAINST FRACTURE OR DETACHMENT.

- V ] — SLEEVE ORIENTATION: (V) VERTICAL, (H) HORIZONTAL
- C ] — ATTACHMENT METHOD (CONCRETE)
- 6 ] — TOTAL SLEEVE HEIGHT: \_ \_" (60")
- 0 ] —
- 1 ] — HEIGHT OF ROOF DECK: \_ \_" (17")
- 7 ] —
- 2 ] — T.O.S. - B.O.S.: \_ \_" (25")
- 5 ] —



**PROPRIETARY AND CONFIDENTIAL**  
The information contained in this drawing is the sole property of Rooftop Anchor, Inc. Any reproduction in part or as a whole without written permission of Rooftop Anchor, Inc. is prohibited.

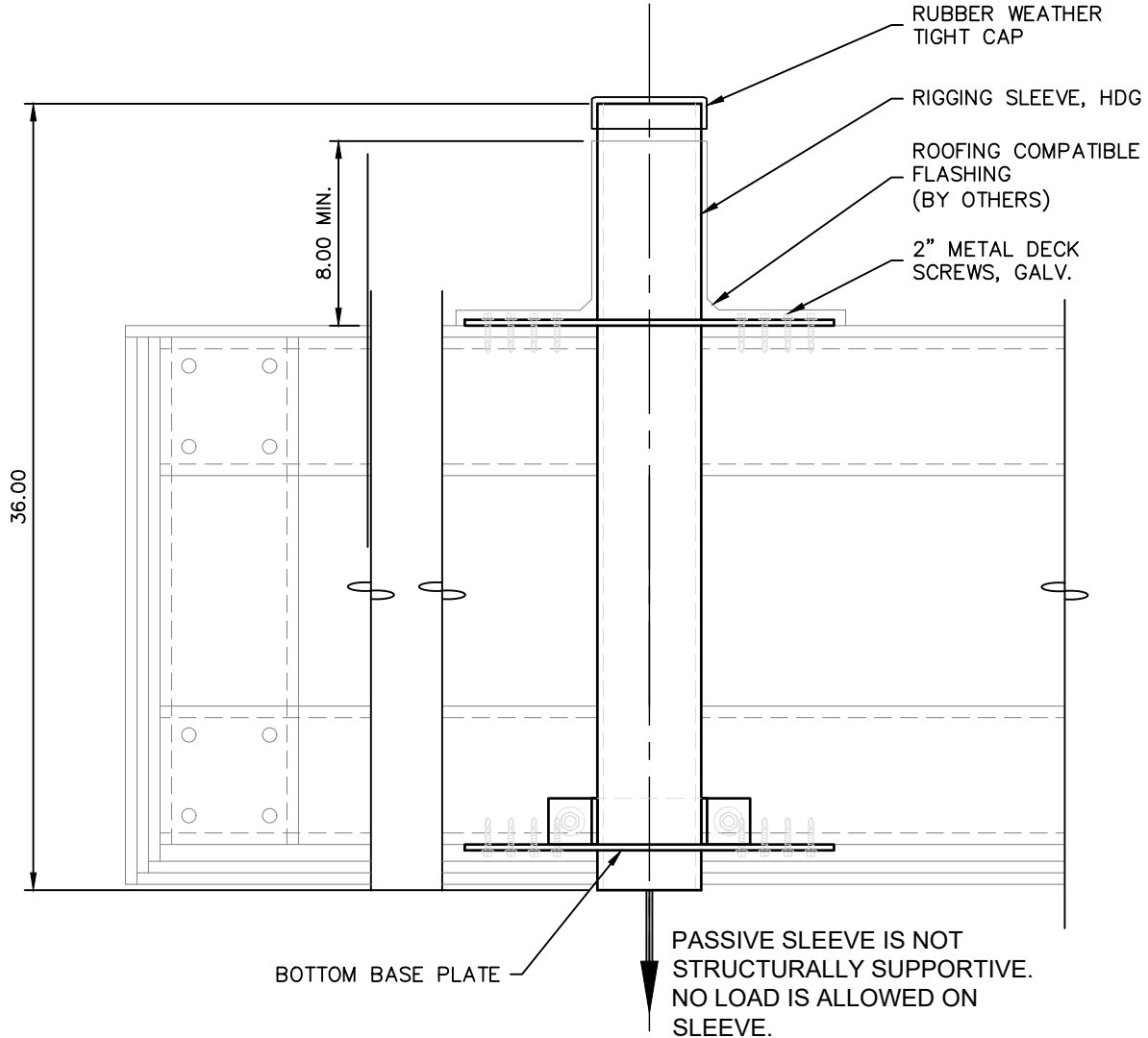


# TECHNICAL DATA SHEET

## NON-STRUCTURAL RIGGING SLEEVE

CUSTOM

**AXIS**  
ANCHOR PRODUCTS



### NOTES:

1. THE PROJECT STRUCTURAL ENGINEER IS RESPONSIBLE FOR THE DESIGN OF THE BUILDING STRUCTURE AND LOCAL REINFORCEMENT WHERE REQUIRED, TO WITHSTAND THE APPLIED LOADS OF THE ROOF SAFETY EQUIPMENT SUPPLIED BY ROOFTOP ANCHOR, INC.
2. FALL ARREST SAFETY ANCHORS ARE DESIGNED TO A TYPICAL MAXIMUM FALL ARRESTING FORCE OF 1,800 lbs WHEN WEARING A BODY HARNESS, WITH A FACTOR OF SAFETY OF 2 WITHOUT ANY PERMANENT DEFORMATION; AND TO 5,000 lbs AGAINST FRACTURE OR DETACHMENT.

ROOFTOP ANCHOR

#### PROPRIETARY AND CONFIDENTIAL

The information contained in this drawing is the sole property of Rooftop Anchor, Inc. Any reproduction in part or as a whole without written permission of Rooftop Anchor, Inc. is prohibited.

8.7