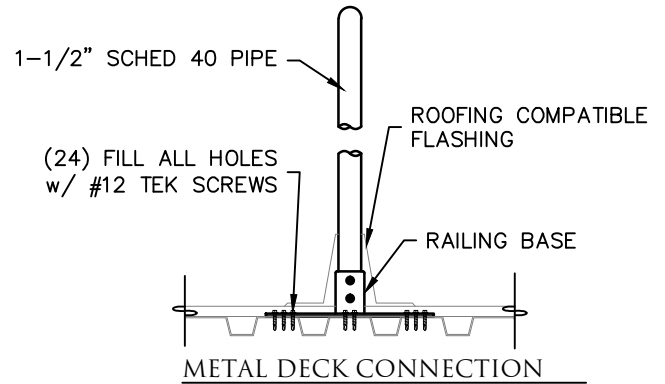
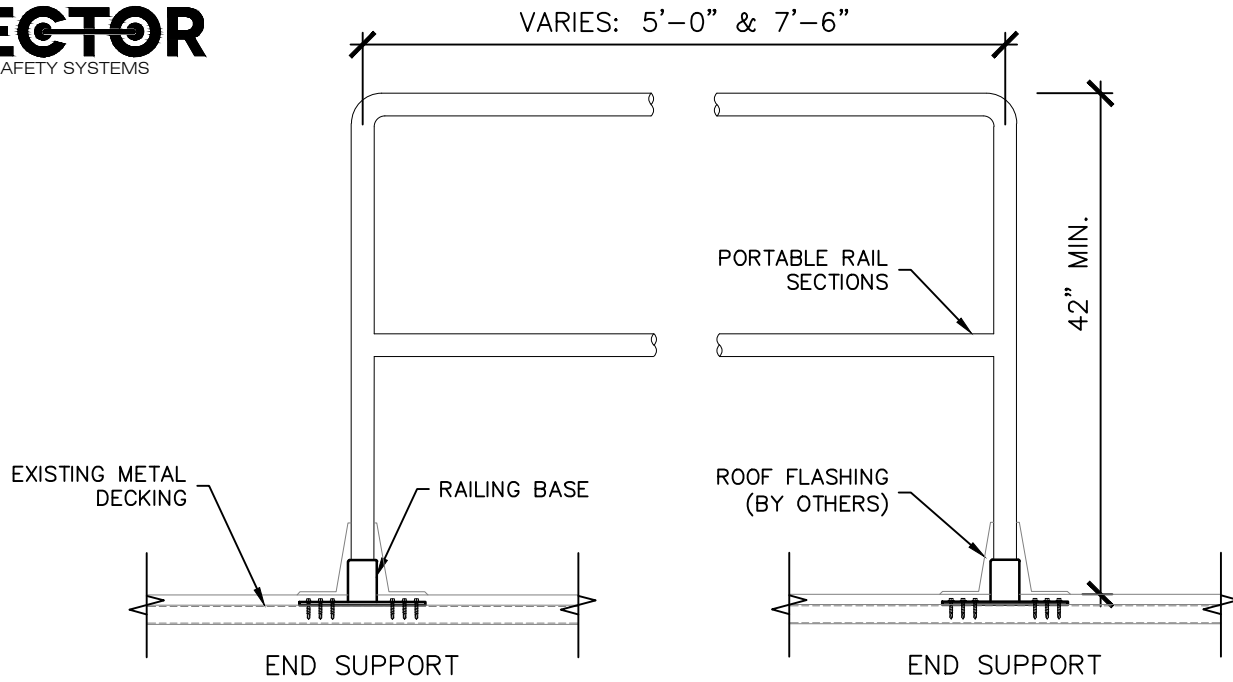


# TECHNICAL DATA SHEET

## PORTABLE METAL FIXED GUARDRAIL SYSTEM

GMP \_ \_

**SECTOR**  
SAFETY SYSTEMS

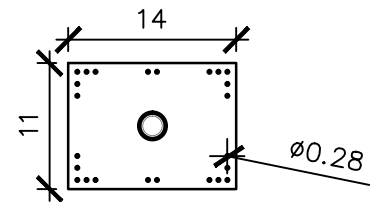


PART # GMP \_ \_

- G ]— PRODUCT TYPE (GUARDRAIL)
- M ]— ATTACHMENT METHOD (METAL FIXED)
- P ]— GUARDRAIL STYLE (PORTABLE)
- 4 ]— VERTICAL HEIGHT: \_ "(42")
- 2 ]
- 7 ]— RAIL LENGTH: \_ ' \_ " (7' 6")
- 6 ]

**NOTES:**

1. ALL GUARDRAIL SHALL BE A PART OF AN OSHA COMPLIANT GUARDRAIL SYSTEM.
2. GUARDRAIL SHALL HAVE A MINIMUM HEIGHT OF 42" ABOVE THE FINISHED WALKING SURFACE.
3. PIPE RAILINGS SHALL HAVE A MINIMUM NOMINAL DIAMETER OF 1 1/4".
4. POST SPACING SHALL NOT EXCEED 8'-0".
5. ANCHORING OF POSTS AND FRAMING OF MEMBERS FOR RAILS SHALL BE SUCH THAT THE COMPLETED STRUCTURE SHALL BE CAPABLE OF WITHSTANDING A LOAD OF AT LEAST 200 POUNDS APPLIED IN ANY DIRECTION AT ANY POINT ON THE TOP RAIL.



BASEPLATE DIMENSIONS



**PROPRIETARY AND CONFIDENTIAL**  
The information contained in this drawing is the sole property of Rooftop Anchor, Inc. Any reproduction in part or as a whole without written permission of Rooftop Anchor, Inc. is prohibited.

	PIPE	BRACKETS
MATERIAL	ASTM A53	CAST IRON, GALV.
QUALITY	100% VISUAL INSP.	100% VISUAL INSP.
COLOR		DULL METALLIC

