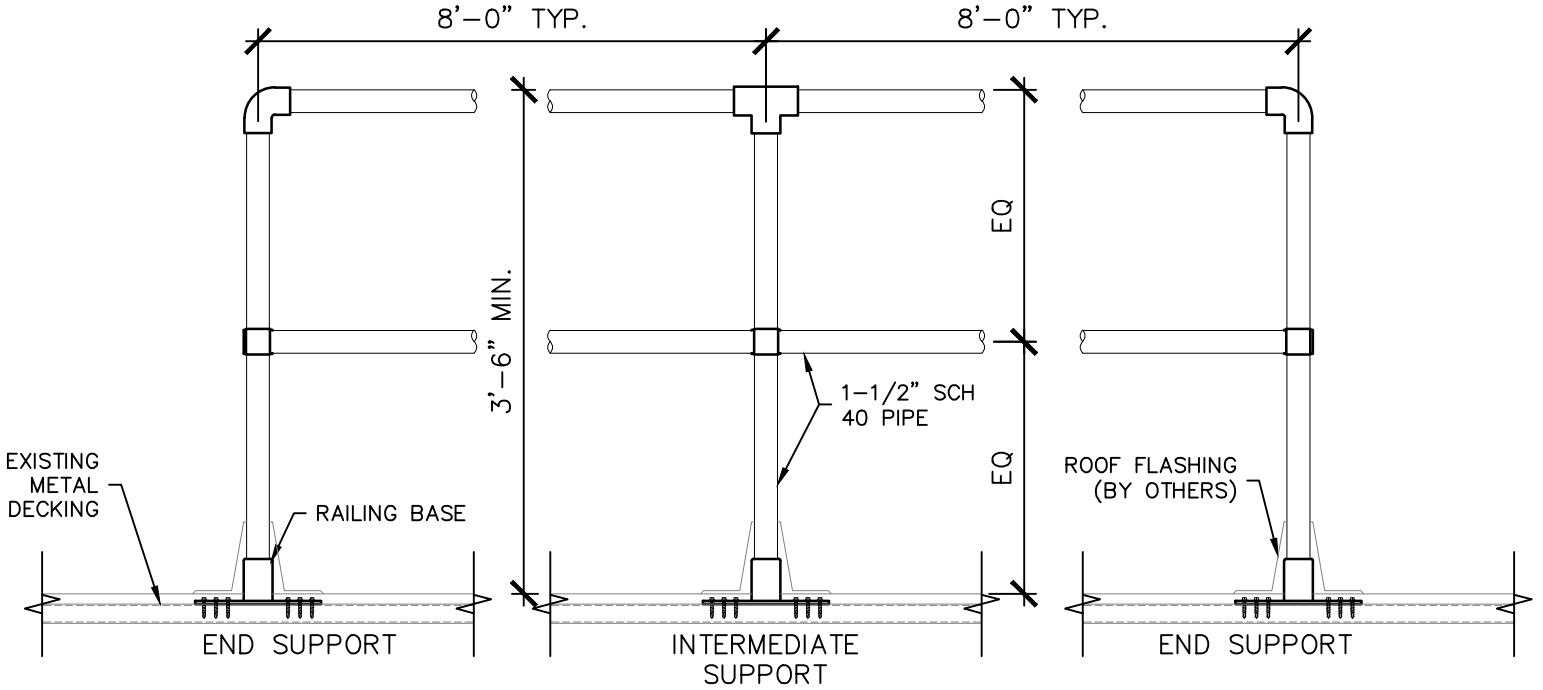


# TECHNICAL DATA SHEET

## COUNTORED METAL FIXED GUARDRAIL SYSTEM

GMA \_ \_

**SECTOR**  
SAFETY SYSTEMS

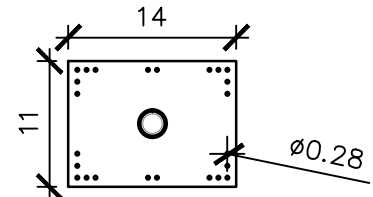
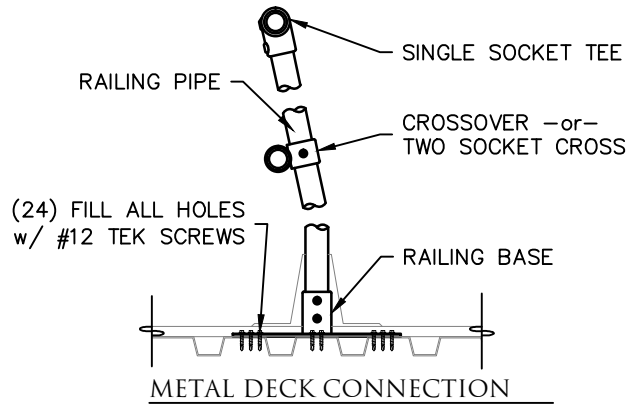


PART # GMA \_ \_

- G ] PRODUCT TYPE (GUARDRAIL)
- M ] ATTACHMENT METHOD (METAL FIXED)
- A ] GUARDRAIL STYLE (COUNTORED)
- 4 ] VERTICAL HEIGHT: \_ "(42")
- 2 ]
- 8 ] RAIL LENGTH: \_ \_" (8' 0")
- 0 ]

**NOTES:**

1. ALL GUARDRAIL SHALL BE A PART OF AN OSHA COMPLIANT GUARDRAIL SYSTEM.
2. GUARDRAIL SHALL HAVE A MINIMUM HEIGHT OF 42" ABOVE THE FINISHED WALKING SURFACE.
3. PIPE RAILINGS SHALL HAVE A MINIMUM NOMINAL DIAMETER OF 1 1/4".
4. POST SPACING SHALL NOT EXCEED 8'-0".
5. ANCHORING OF POSTS AND FRAMING OF MEMBERS FOR RAILS SHALL BE SUCH THAT THE COMPLETED STRUCTURE SHALL BE CAPABLE OF WITHSTANDING A LOAD OF AT LEAST 200 POUNDS APPLIED IN ANY DIRECTION AT ANY POINT ON THE TOP RAIL.



BASEPLATE DIMENSIONS



**PROPRIETARY AND CONFIDENTIAL**  
The information contained in this drawing is the sole property of Rooftop Anchor, Inc. Any reproduction in part or as a whole without written permission of Rooftop Anchor, Inc. is prohibited.

	PIPE	BRACKETS
MATERIAL	ASTM A53	CAST IRON, GALV.
QUALITY	100% VISUAL INSP.	100% VISUAL INSP.
COLOR	METALLIC	DULL METALLIC

